



GLENWOOD ESTATE

cosy living comes naturally

House overview

House type **E**

P+1E

6 rooms

3 bathrooms

1 toilet

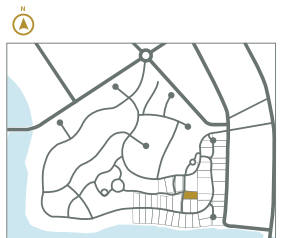
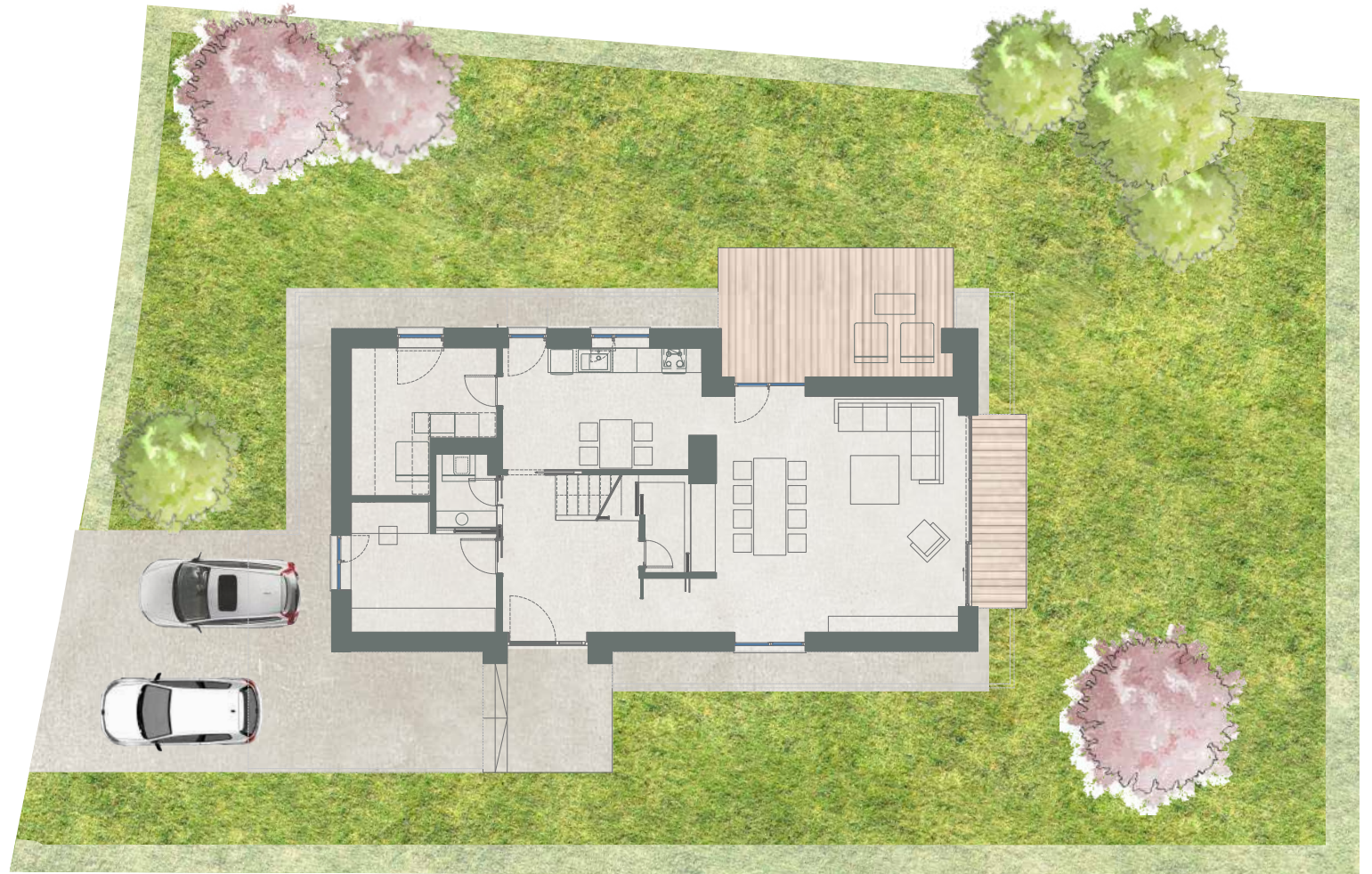
Total net area
228.0 m²

Gross built area
249.0 m²

Private garden
344.0 m²

Plot size
592.0m²

Developed by
SPEDWELL





GLENWOOD ESTATE

cozy living comes naturally

House overview

House type E

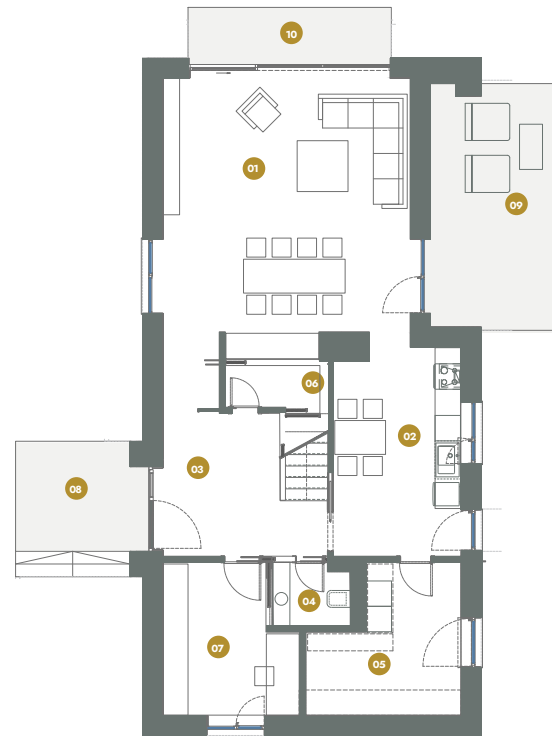
P+1E

6 rooms

3 bathrooms

1 toilet

Developed by
SPEDWELL



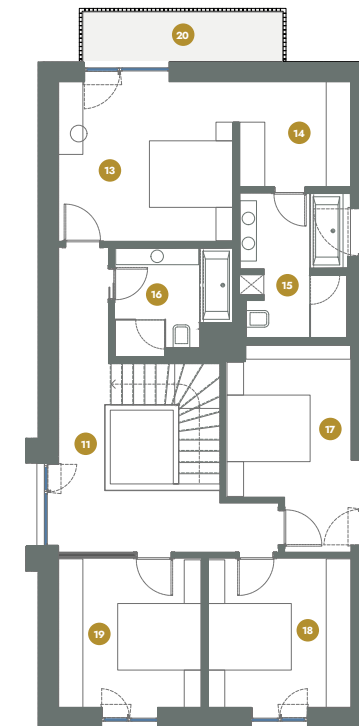
Ground Floor

01 Living Room	38.0 m ²
02 Kitchen	15.0 m ²
03 Entrance/Hall	13.6 m ²
04 Toilet	2.8 m ²
05 Technical	11.0 m ²
06 Storage	2.4 m ²
07 Office	10.5 m ²

Total interior 93.3 m²

08 Outdoor terrace	8.0 m ²
09 Outdoor terrace	18.4 m ²
10 Outdoor terrace	6.5 m ²

Total (including terrace) 126.2 m²



First Floor

11 Hall	14.9 m ²
12 Stair	4.5 m ²
13 Master Bedroom	16.3 m ²
14 Dressing	7.1 m ²
15 On Suite Bathroom	9.0 m ²
16 Bathroom	6.8 m ²
17 Bedroom	13.1 m ²
18 Bedroom	12.6 m ²
19 Bedroom	12.6 m ²

Total interior 96.9 m²

20 Terrace 6.1 m²

Total (including terrace) 103.0 m²