



GLENWOOD ESTATE

cozy living comes naturally

House overview

House type **C**

P+1E

4 rooms

2 bathrooms

1 toilet

Total net area

153.4 m²

Gross built area

200.5 m²

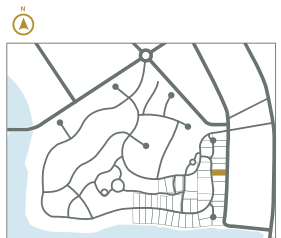
Private garden

196.0 m²

Plot size

396.0m²

Developed by
SPEDWELL



DISCLAIMER: this material does not represent an offer or a contract and is for informational purposes. Due to the changes that may occur during the construction, the surfaces can be modified without prior notification, but in full accordance with any contract signed.



GLENWOOD ESTATE

cozy living comes naturally

House overview

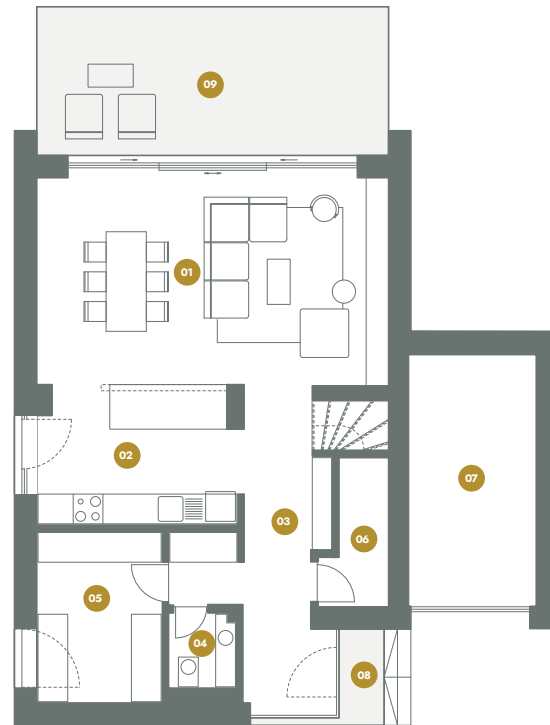
House type C

P+1E

4 rooms

2 bathrooms

1 toilet



Ground Floor

01 Living Room	30.4 m ²
02 Kitchen	11.2 m ²
03 Hall	12.8 m ²
04 Toilet	2.1 m ²
05 Technical/Storage	8.6 m ²
06 Storage	3.4 m ²
07 Garage	13.6 m ²

Total interior 82.1 m²

08 Outdoor terrace 2.2 m²

09 Outdoor terrace 22.2 m²

Total (including terrace) 106.5 m²



First Floor

10 Master Bedroom	19.7 m ²
11 On Suite Bathroom	9.6 m ²
12 Dressing	10.6 m ²
13 Bedroom	14.1 m ²
14 Bathroom	4.9 m ²
15 Hall	8.0 m ²
16 Stair	4.4 m ²

Total interior 71.3 m²

17 Terrace 7.0 m²

Total (including terrace) 78.3 m²