



GLENWOOD ESTATE

cozy living comes naturally

House overview

House type A

P+1E

4 rooms

2 bathrooms

1 toilet

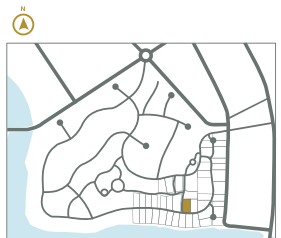
Total net area
138.2 m²

Gross built area
183.0 m²

Private garden
310.1 m²

Plot size
495.0m²

Developed by
SPEDWELL



DISCLAIMER: this material does not represent an offer or a contract and is for informational purposes. Due to the changes that may occur during the construction, the surfaces can be modified without prior notification, but in full accordance with any contract signed.



GLENWOOD ESTATE

cozy living comes naturally

House overview

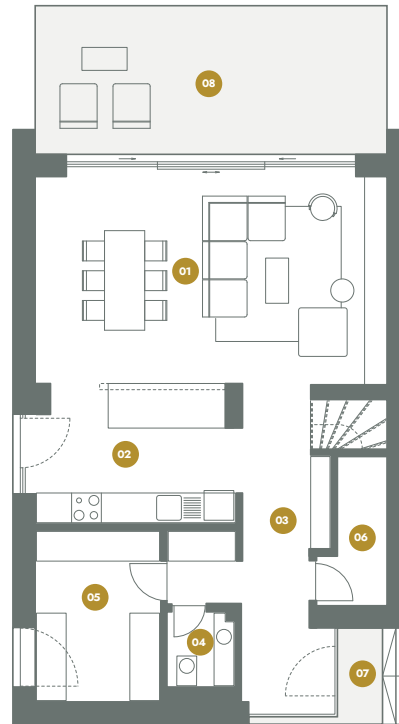
House type A

P+1E

4 rooms

2 bathrooms

1 toilet



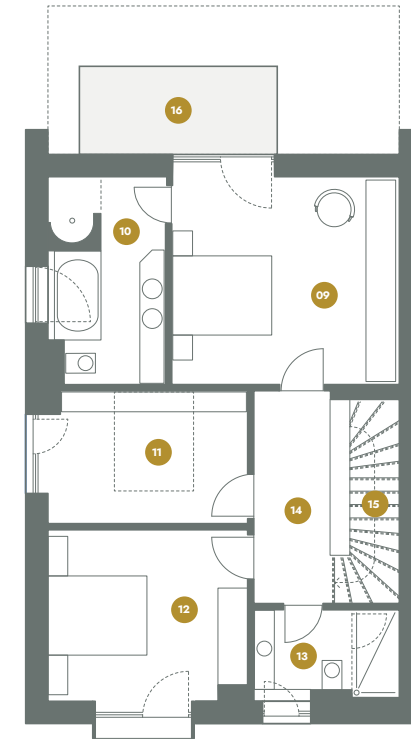
Ground Floor

01 Living Room	30.4 m ²
02 Kitchen	11.2 m ²
03 Hall	12.8 m ²
04 Toilet	2.1 m ²
05 Technical/Storage	8.6 m ²
06 Storage	3.4 m ²

Total interior 68.5 m²

07 Outdoor terrace	2.2 m ²
08 Outdoor terrace	22.2 m ²

Total (including terrace) 92.9 m²



First Floor

09 Master Bedroom	19.0 m ²
10 On Suite Bathroom	9.6 m ²
11 Dressing	10.6 m ²
12 Bedroom	13.7 m ²
13 Bathroom	4.9 m ²
14 Hall	7.5 m ²
15 Stair	4.4 m ²

Total interior 69.7 m²

16 Terrace	7.6 m ²
------------	--------------------

Total (including terrace) 77.3 m²