



## GLENWOOD ESTATE

*cosy living comes naturally*

### House overview

Unit AI-05

House type E

P+1E

6 rooms

3 bathrooms

1 toilet

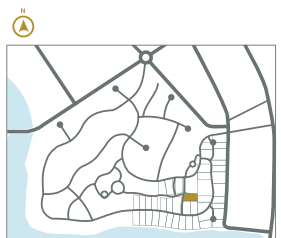
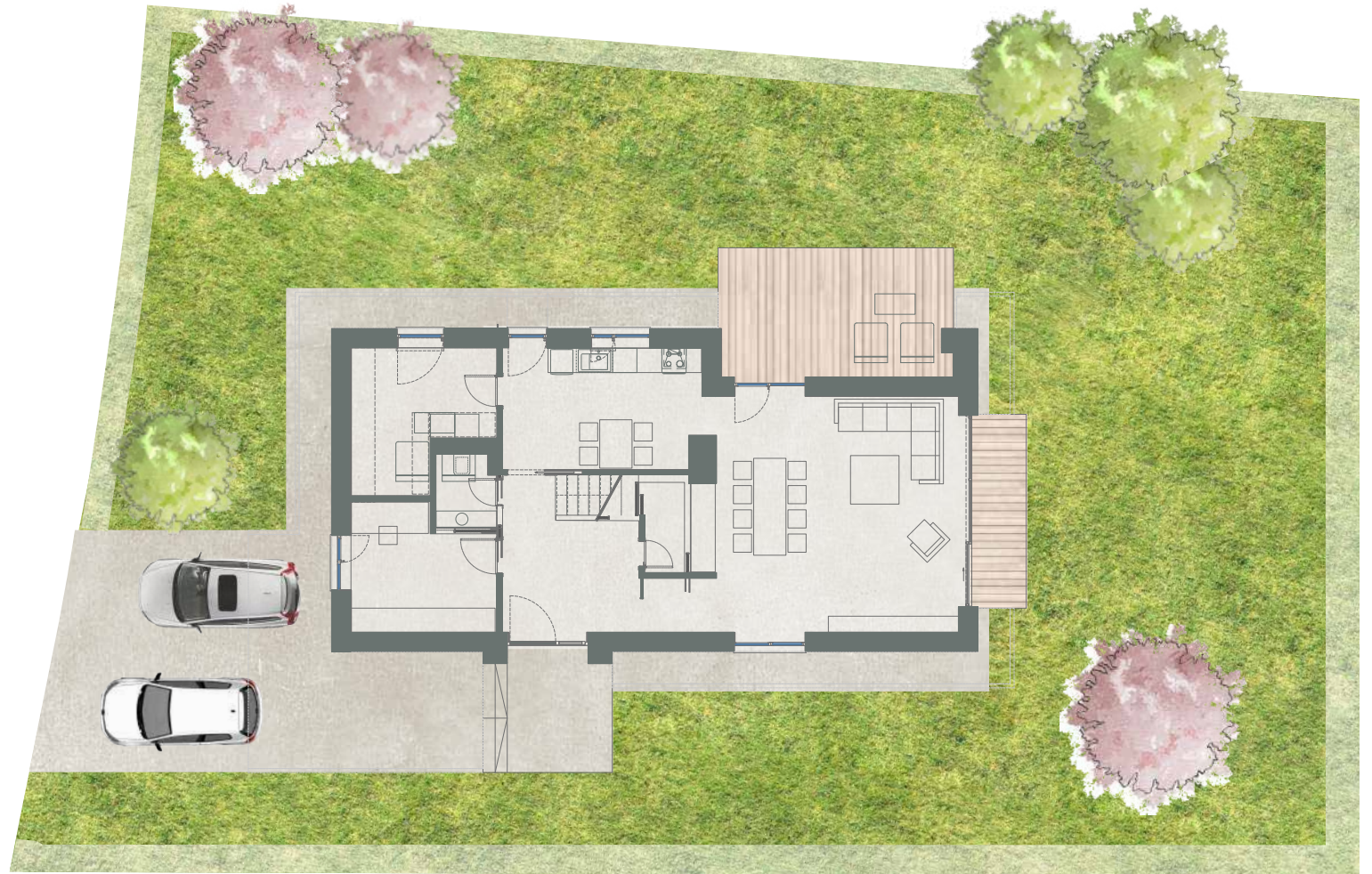
**Total net area**  
**228.0 m<sup>2</sup>**

**Gross built area**  
**249.0 m<sup>2</sup>**

**Private garden**  
**344.0 m<sup>2</sup>**

**Plot size**  
**592.0m<sup>2</sup>**

Developed by  
**SPEDWELL**





## GLENWOOD ESTATE

cozy living comes naturally

### House overview

Unit AI-05

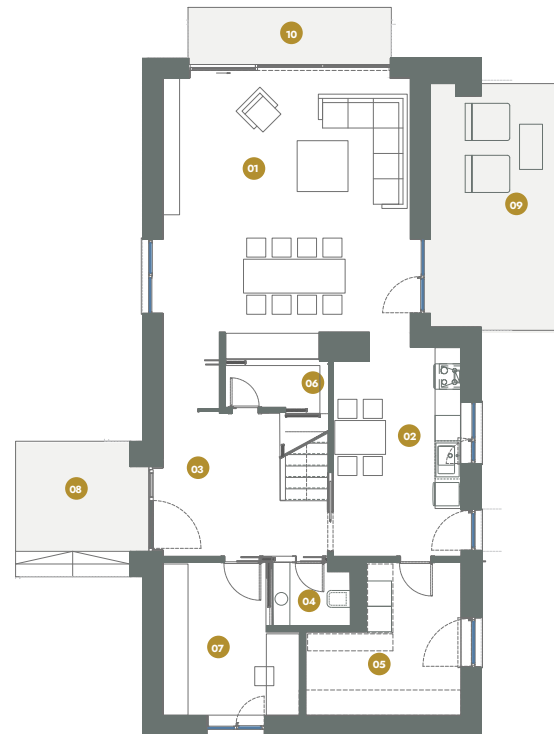
House type E

P+1E

6 rooms

3 bathrooms

1 toilet



### Ground Floor

01 Living Room	38.0 m <sup>2</sup>
02 Kitchen	15.0 m <sup>2</sup>
03 Entrance/Hall	13.6 m <sup>2</sup>
04 Toilet	2.8 m <sup>2</sup>
05 Technical	11.0 m <sup>2</sup>
06 Storage	2.4 m <sup>2</sup>
07 Office	10.5 m <sup>2</sup>

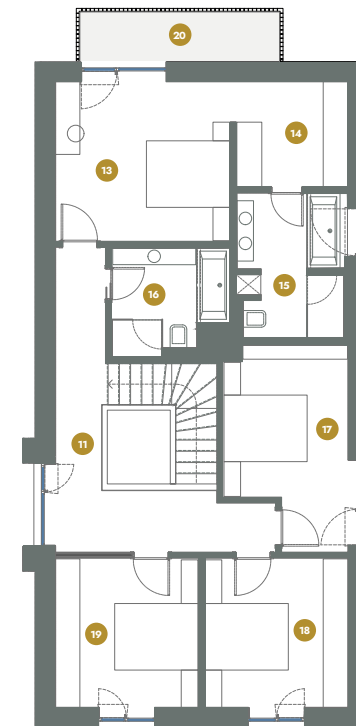
**Total interior 93.3 m<sup>2</sup>**

08 Outdoor terrace 8.0 m<sup>2</sup>

09 Outdoor terrace 18.4 m<sup>2</sup>

10 Outdoor terrace 6.5 m<sup>2</sup>

**Total (including terrace) 126.2 m<sup>2</sup>**



### First Floor

11 Hall	14.9 m <sup>2</sup>
12 Stair	4.5 m <sup>2</sup>
13 Master Bedroom	16.3 m <sup>2</sup>
14 Dressing	7.1 m <sup>2</sup>
15 On Suite Bathroom	9.0 m <sup>2</sup>
16 Bathroom	6.8 m <sup>2</sup>
17 Bedroom	13.1 m <sup>2</sup>
18 Bedroom	12.6 m <sup>2</sup>
19 Bedroom	12.6 m <sup>2</sup>

**Total interior 96.9 m<sup>2</sup>**

20 Terrace 6.1 m<sup>2</sup>

**Total (including terrace) 103.0 m<sup>2</sup>**