



**GLENWOOD ESTATE**

*cozy living comes naturally*

#### House overview

Unit SE-06

House type F

P+1E

6 rooms

2 bathrooms

1 toilet

**Total net area**  
**210.2 m<sup>2</sup>**

**Gross built area**  
**266.8 m<sup>2</sup>**

**Private garden**  
**297.0 m<sup>2</sup>**

**Plot size**  
**557.0m<sup>2</sup>**

Developed by  
**SPEDWELL**



DISCLAIMER: this material does not represent an offer or a contract and is for informational purposes. Due to the changes that may occur during the construction, the surfaces can be modified without prior notification, but in full accordance with any contract signed.



## GLENWOOD ESTATE

cozy living comes naturally

### House overview

Unit SE-06

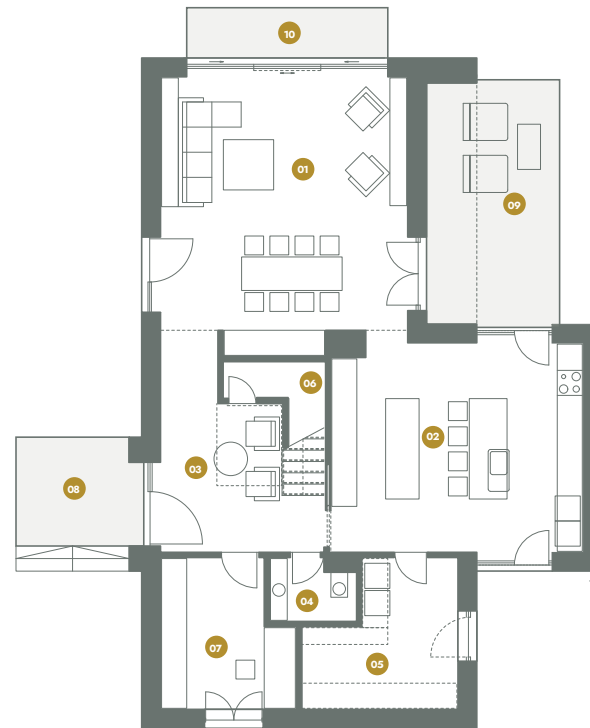
House type F

P+1E

6 rooms

2 bathrooms

1 toilet



### Ground Floor

|                  |                     |
|------------------|---------------------|
| 01 Living Room   | 38.6 m <sup>2</sup> |
| 02 Kitchen       | 31.0 m <sup>2</sup> |
| 03 Entrance/Hall | 14.9 m <sup>2</sup> |
| 04 Toilet        | 3.0 m <sup>2</sup>  |
| 05 Technical     | 11.0 m <sup>2</sup> |
| 06 Storage       | 2.3 m <sup>2</sup>  |
| 07 Office        | 10.5 m <sup>2</sup> |

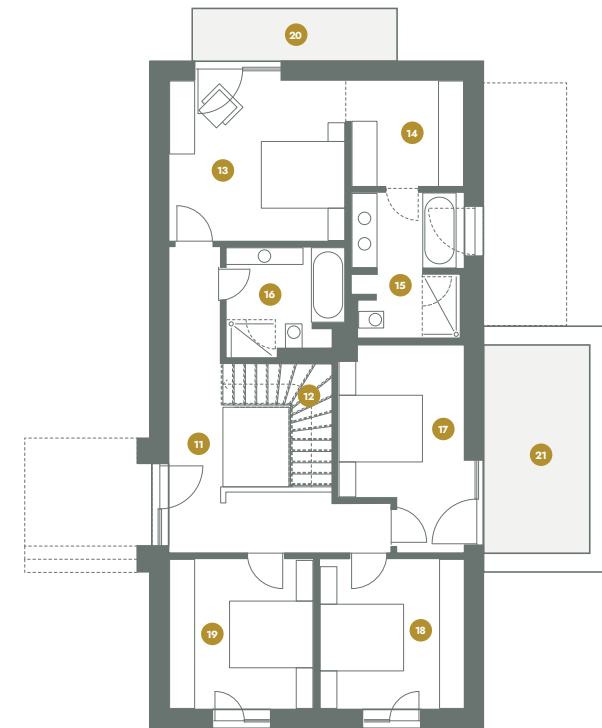
**Total interior** 111.3 m<sup>2</sup>

08 Outdoor terrace 8.0 m<sup>2</sup>

09 Outdoor terrace 19.0 m<sup>2</sup>

10 Outdoor terrace 6.5 m<sup>2</sup>

**Total (including terrace)** 144.8 m<sup>2</sup>



### First Floor

|                      |                     |
|----------------------|---------------------|
| 11 Hall              | 15.8 m <sup>2</sup> |
| 12 Stair             | 4.5 m <sup>2</sup>  |
| 13 Master Bedroom    | 16.8 m <sup>2</sup> |
| 14 Dressing          | 7.2 m <sup>2</sup>  |
| 15 On Suite Bathroom | 9.0 m <sup>2</sup>  |
| 16 Bathroom          | 6.8 m <sup>2</sup>  |
| 17 Bedroom           | 13.6 m <sup>2</sup> |
| 18 Bedroom           | 12.6 m <sup>2</sup> |
| 19 Bedroom           | 12.6 m <sup>2</sup> |

**Total interior** 98.9 m<sup>2</sup>

20 Terrace 6.1 m<sup>2</sup>

21 Terrace 13.1 m<sup>2</sup>

**Total (including terrace)** 118.1 m<sup>2</sup>