



GLENWOOD ESTATE

cosy living comes naturally

House overview

Unit IB-02

House type B

P+1E+M

5 rooms

2 bathrooms

1 toilet

Total net area
202.9 m²

Gross built area
263.4 m²

Private garden
323.0 m²

Plot size
508.0m²

Developed by
SPEDWELL



DISCLAIMER: this material does not represent an offer or a contract and is for informational purposes. Due to the changes that may occur during the construction, the surfaces can be modified without prior notification, but in full accordance with any contract signed.



GLENWOOD ESTATE

cozy living comes naturally

House overview

Unit IB-02

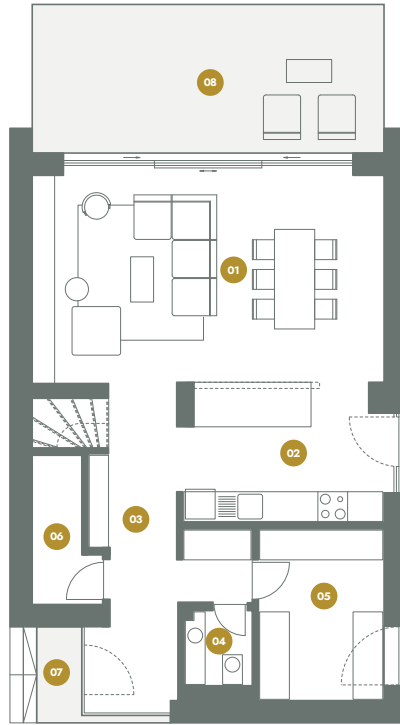
House type B

P+1E+M

5 rooms

2 bathrooms

1 toilet



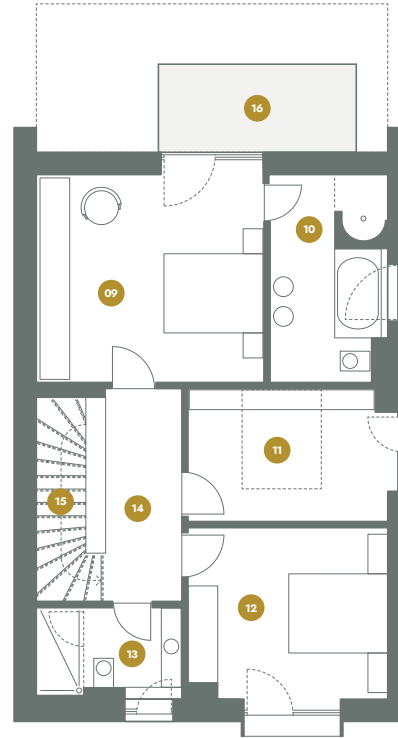
Ground Floor

| | |
|----------------------|---------------------|
| 01 Living Room | 30.4 m ² |
| 02 Kitchen | 11.2 m ² |
| 03 Hall | 12.8 m ² |
| 04 Toilet | 2.1 m ² |
| 05 Technical/Storage | 8.6 m ² |
| 06 Storage | 3.4 m ² |

Total interior 68.5 m²

| | |
|--------------------|---------------------|
| 07 Outdoor terrace | 2.2 m ² |
| 08 Outdoor terrace | 22.2 m ² |

Total (including terrace) 92.9 m²



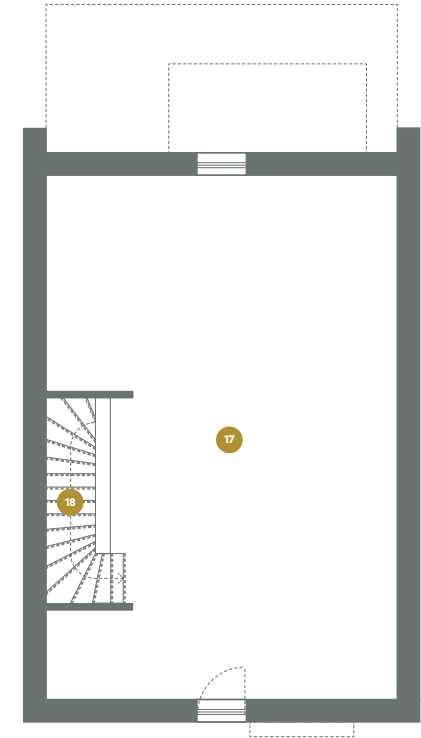
First Floor

| | |
|----------------------|---------------------|
| 09 Master Bedroom | 19.7 m ² |
| 10 On Suite Bathroom | 9.6 m ² |
| 11 Dressing | 10.6 m ² |
| 12 Bedroom | 14.1 m ² |
| 13 Bathroom | 4.9 m ² |
| 14 Hall | 8.0 m ² |
| 15 Stair | 4.4 m ² |

Total interior 71.3 m²

| | |
|------------|--------------------|
| 16 Terrace | 7.0 m ² |
|------------|--------------------|

Total (including terrace) 78.3 m²



Attic

| | |
|-----------------|---------------------|
| 17 Loft / Attic | 58.7 m ² |
| 18 Stair | 4.4 m ² |

Total interior 63.1 m²