



GLENWOOD ESTATE

cozy living comes naturally

House overview

Unit IC-03

House type A'

P+1E

4 rooms

2 bathrooms

1 toilet

Total net area

139.8 m²

Gross built area

182.5 m²

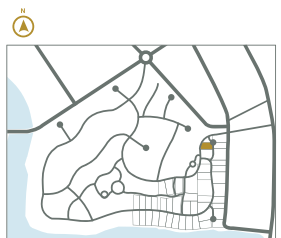
Private garden

151.0 m²

Plot size

322.0m²

Developed by
SPEDWELL



DISCLAIMER: this material does not represent an offer or a contract and is for informational purposes. Due to the changes that may occur during the construction, the surfaces can be modified without prior notification, but in full accordance with any contract signed.



GLENWOOD ESTATE

cozy living comes naturally

House overview

Unit IC-03

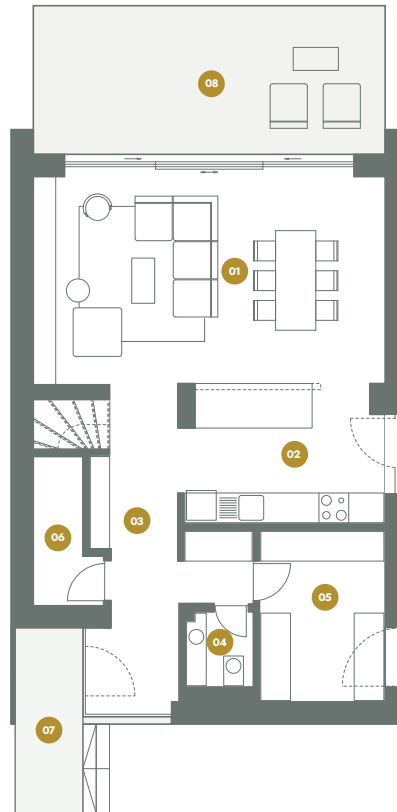
House type A'

P+1E

4 rooms

2 bathrooms

1 toilet



Ground Floor

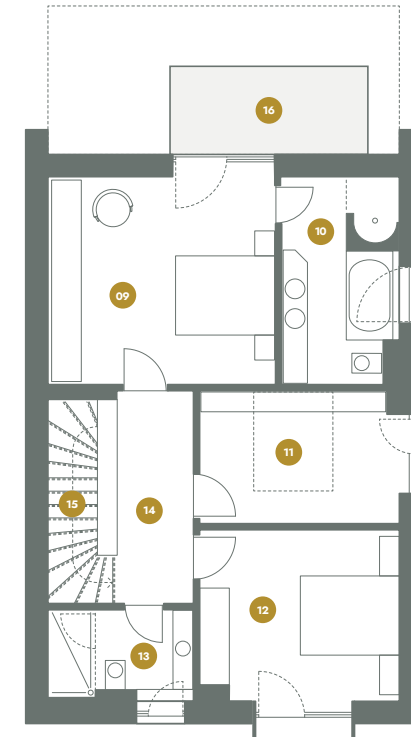
01 Living Room	30.4 m ²
02 Kitchen	11.2 m ²
03 Hall	12.8 m ²
04 Toilet	2.1 m ²
05 Technical/Storage	8.6 m ²
06 Storage	3.4 m ²

Total interior 68.5 m²

07 Outdoor terrace 5.3 m²

08 Outdoor terrace 22.2 m²

Total (including terrace) 96.0 m²



First Floor

09 Master Bedroom	19.7 m ²
10 On Suite Bathroom	9.6 m ²
11 Dressing	10.6 m ²
12 Bedroom	14.1 m ²
13 Bathroom	4.9 m ²
14 Hall	8.0 m ²
15 Stair	4.4 m ²

Total interior 71.3 m²

16 Terrace 7.0 m²

Total (including terrace) 78.3 m²