



## GLENWOOD ESTATE

cozy living comes naturally

### House overview

Unit IC-01  
House type A'

P+1E  
4 rooms  
2 bathrooms  
1 toilet

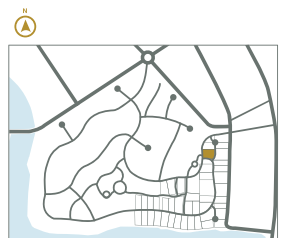
**Total net area**  
**139.8 m<sup>2</sup>**

**Gross built area**  
**182.5 m<sup>2</sup>**

**Private garden**  
**218.0 m<sup>2</sup>**

**Plot size**  
**389.0m<sup>2</sup>**

Developed by  
**SPEDWELL**



DISCLAIMER: this material does not represent an offer or a contract and is for informational purposes. Due to the changes that may occur during the construction, the surfaces can be modified without prior notification, but in full accordance with any contract signed.



**GLENWOOD ESTATE**

*cozy living comes naturally*

**House overview**

Unit IC-01

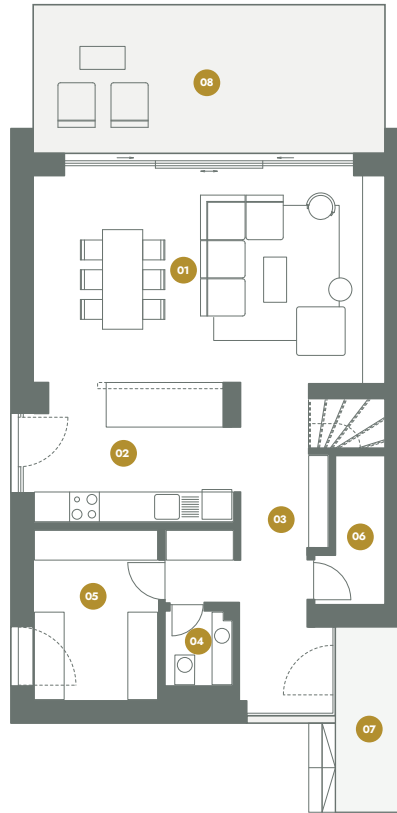
House type A'

P+1E

4 rooms

2 bathrooms

1 toilet



**Ground Floor**

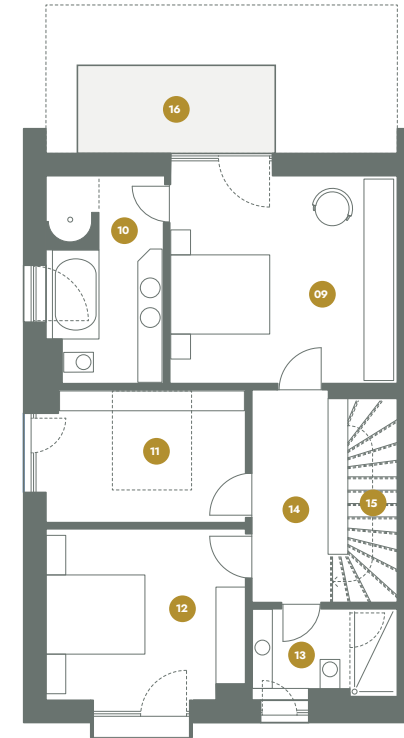
01 Living Room	30.4 m <sup>2</sup>
02 Kitchen	11.2 m <sup>2</sup>
03 Hall	12.8 m <sup>2</sup>
04 Toilet	2.1 m <sup>2</sup>
05 Technical/Storage	8.6 m <sup>2</sup>
06 Storage	3.4 m <sup>2</sup>

**Total interior 68.5 m<sup>2</sup>**

07 Outdoor terrace 5.3 m<sup>2</sup>

08 Outdoor terrace 22.2 m<sup>2</sup>

**Total (including terrace) 96.0 m<sup>2</sup>**



**First Floor**

09 Master Bedroom	19.7 m <sup>2</sup>
10 On Suite Bathroom	9.6 m <sup>2</sup>
11 Dressing	10.6 m <sup>2</sup>
12 Bedroom	14.1 m <sup>2</sup>
13 Bathroom	4.9 m <sup>2</sup>
14 Hall	8.0 m <sup>2</sup>
15 Stair	4.4 m <sup>2</sup>

**Total interior 71.3 m<sup>2</sup>**

16 Terrace 7.0 m<sup>2</sup>

**Total (including terrace) 78.3 m<sup>2</sup>**