



## GLENWOOD ESTATE

cozy living comes naturally

### House overview

Unit SE-06

House type F

P+1E

6 rooms

2 bathrooms

1 toilet

**Total net area**  
**205.0 m<sup>2</sup>**

**Gross built area**  
**266.8 m<sup>2</sup>**

**Private garden**  
**297.0 m<sup>2</sup>**

**Plot size**  
**557.0m<sup>2</sup>**

Developed by  
**SPEDWELL**



DISCLAIMER: this material does not represent an offer or a contract and is for informational purposes. Due to the changes that may occur during the construction, the surfaces can be modified without prior notification, but in full accordance with any contract signed.



## GLENWOOD ESTATE

cozy living comes naturally

### House overview

Unit SE-06

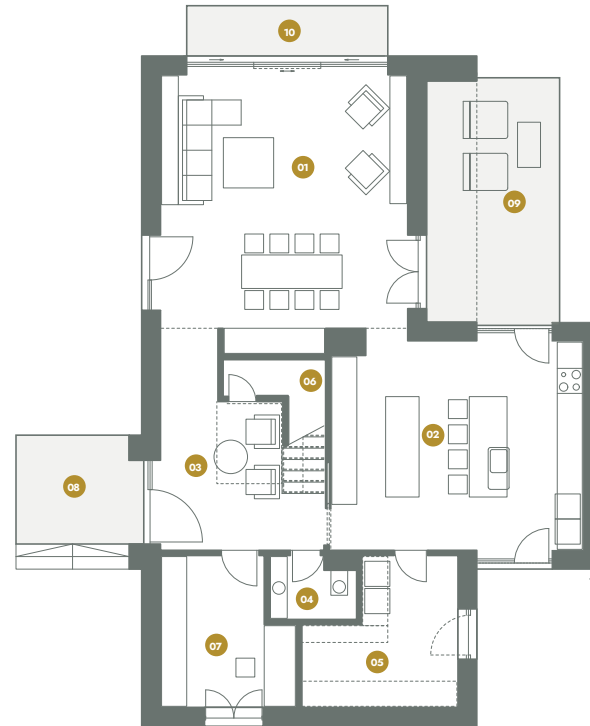
House type F

P+1E

6 rooms

2 bathrooms

1 toilet



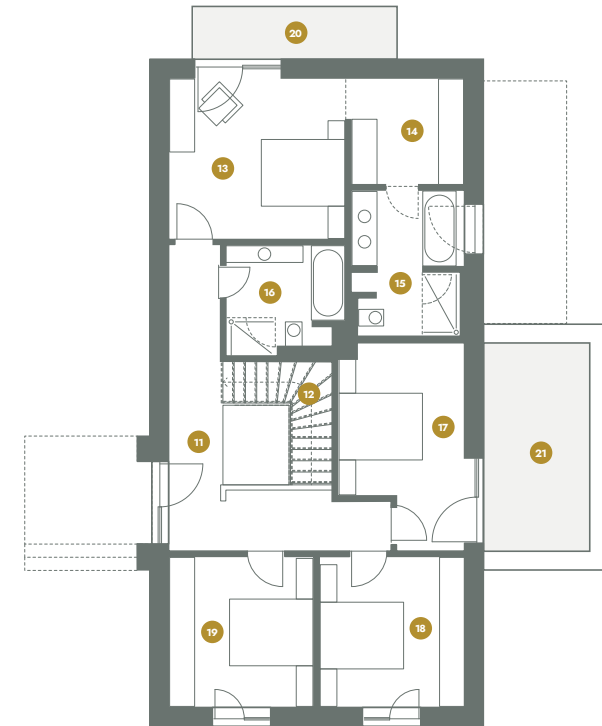
#### Ground Floor

01 Living Room	37.5 m <sup>2</sup>
02 Kitchen	30.0 m <sup>2</sup>
03 Entrance/Hall	13.5 m <sup>2</sup>
04 Toilet	2.7 m <sup>2</sup>
05 Technical	11.0 m <sup>2</sup>
06 Storage	2.4 m <sup>2</sup>
07 Office	10.5 m <sup>2</sup>

**Total interior 107.6 m<sup>2</sup>**

08 Outdoor terrace	7.9 m <sup>2</sup>
09 Outdoor terrace	18.8 m <sup>2</sup>
10 Outdoor terrace	6.5 m <sup>2</sup>

**Total (including terrace) 140.7 m<sup>2</sup>**



#### First Floor

11 Hall	14.9 m <sup>2</sup>
12 Stair	4.5 m <sup>2</sup>
13 Master Bedroom	16.3 m <sup>2</sup>
14 Dressing	7.1 m <sup>2</sup>
15 On Suite Bathroom	9.0 m <sup>2</sup>
16 Bathroom	6.8 m <sup>2</sup>
17 Bedroom	13.1 m <sup>2</sup>
18 Bedroom	12.6 m <sup>2</sup>
19 Bedroom	12.6 m <sup>2</sup>

**Total interior 97.4 m<sup>2</sup>**

20 Terrace	6.1 m <sup>2</sup>
21 Terrace	13.1 m <sup>2</sup>

**Total (including terrace) 116.5 m<sup>2</sup>**